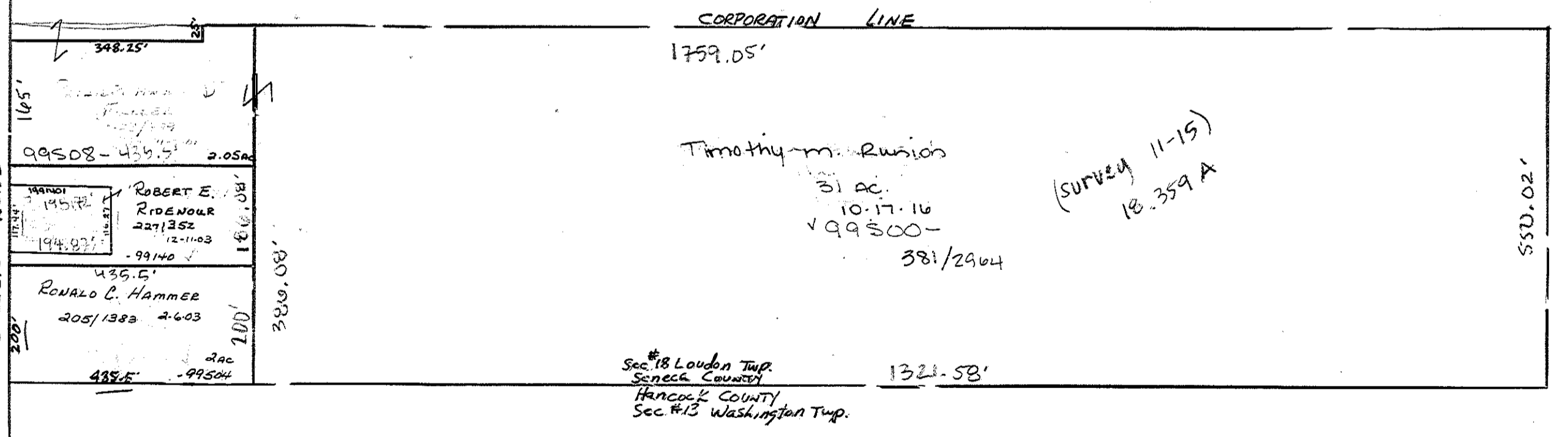
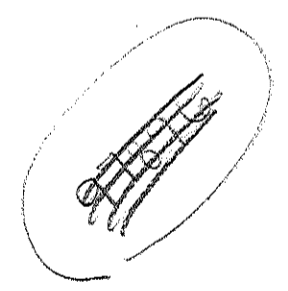


The City of Fostoria  
~~80.00~~ 80.00 AC.  
Annexed 1963  
329/551  
323/710



Timothy M. Rusich  
31 AC.  
10-17-16  
V 99800-  
381/2964  
(SURVEY 11-15)  
18.359 A

Sec 7 Loudon Twp.  
Seneca County  
Hancock County  
Sec #12 Washington Twp.

Sec 18 Loudon Twp.  
Seneca County  
Hancock County  
Sec #13 Washington Twp.